



## FAQ

**?** *I loaded a project, tried to add a function into the session or opened the OCR editor but **nothing happens** and the Modular-X window appears to be **frozen**.*

This is most often caused by using an **evaluation version** of the National Instruments Vision module (either Run-Time engine or the Development Module). This is normal if you are using the trial version of Modular-X and haven't purchased the NI Vision licenses yet either. Check if a new window titled "**Vision**" appeared behind the Modular-X window and if so, click "**Evaluate**". If no such window is found, the **30-day** evaluation period might have expired and thus to keep using the software, a **NI Vision Run-Time license** has to be acquired. See image below.

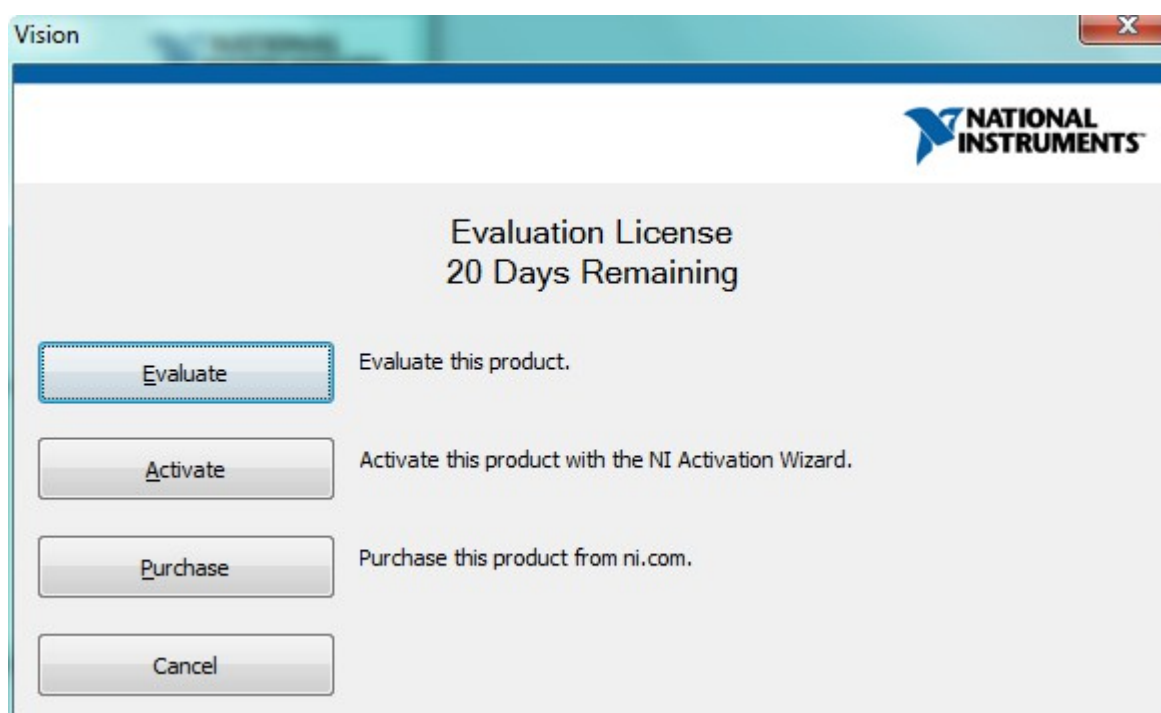


Figure 1: NI Vision evaluation window

**?** *I'm running a **loop** but I cannot follow what's going on real-time; why **no images are displayed**?*

By default, in a loop, no images are displayed while running. If images are wished to be shown, a step can be marked to display the current image at that point by right clicking on the step and checking **Display Result Image**. A small display icon will appear next to the step in the session tree. Multiple steps can be marked but while running only the image from the current marked point will be displayed at a time. See image on the right.

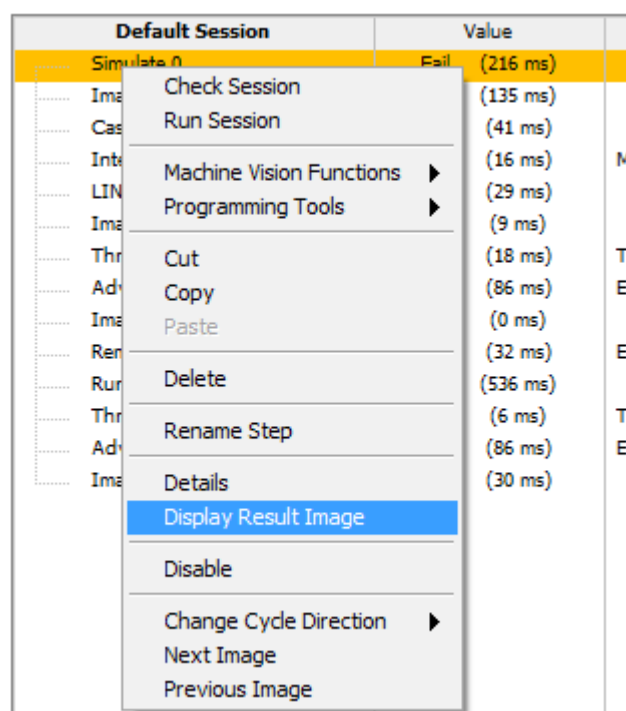


Figure 2: Display Result Image

## MODULAR-X FAQ

### ? *Where is the **origo** situated in the image **coordinate system**?*

Often in machine vision software—and in Modular-X respectfully—so called **indirect coordinate system** is used in which the origo is located in the **top left corner** of the image.

### ? *Why cannot I start the Modular-X **Executor**?*

A valid license file is not found. Modular-X Executor program is disabled in the **trial version** of Modular-X. If you have purchased Modular-X, contact SANXO support to resolve the issue.

### ? *When a session has been running for a long time, I notice that the Modular-X **memory usage** has grown; how can I **reduce** the memory usage?*

Programs running in a loop constantly interact with the memory by reserving and releasing. Sometimes a continuous loop ends up setting the performance over the memory handling thus not always making it to return a chunk. Try adding a tiny **Wait** (of around **a couple of milliseconds**) step to the end of the loop to allow the session to release the memory more efficiently.

### ? *I have a demo version and I would like to buy the full version. What is the process?*

First, you need to start the demo version of Modular-X. When Modular-X is started, click on the Help menu / About. This will open a window. Now you need to click on the BUY NOW label, and copy the appearing ID. Then you need to send this ID to us: [info@sanxo.eu](mailto:info@sanxo.eu). Information about the current pricing of Modular-X should be found on our webpage: <http://www.sanxo.eu/modular-x/prices>. After purchasing Modular-X, we send you a certificate of NI VISION RT license and a certificate of Modular-X license and the necessary license files. See image below.

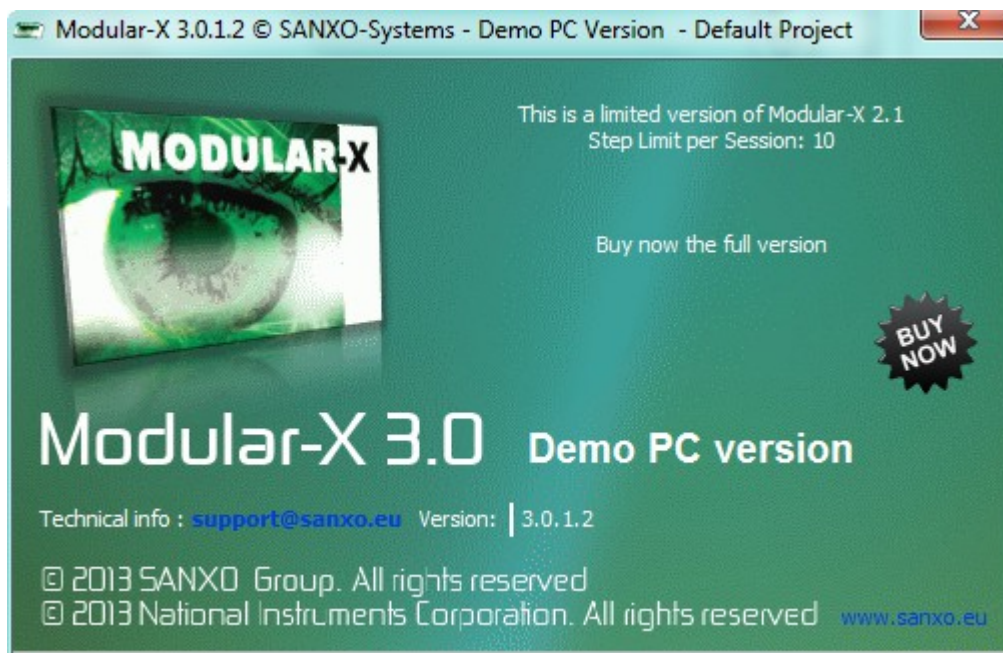


Figure 3: Demo "Buy Now" window

### ? *I can't find a suitable image processing function for my need and I cannot create it myself*

Send your request to [support@sanxo.eu](mailto:support@sanxo.eu) and we will develop the module within a short period of time.

## MODULAR-X FAQ

### ? *How can I check the support of a specific **camera**?*

As our software is based on the National Instruments Vision Library, you can use cameras that are supported by NI. The list of supported cameras:

<http://sine.ni.com/apps/utf8/nipc.specs?action=search&asid=1102>

### ? *I have access only to one of the connected **uEye** cameras in Modular-X. How should I solve this problem?*

The reason of this problem is that when the cameras have similar IDs, Modular-X can not have access to all cameras. Please change camera IDs so that every camera would have different ones. This way Modular-X can have access to all cameras.

### ? *What kind of picture format is supported by Modular-X?*

The supported formats are **bmp, jpg, jp2, tiff, png** and **aipd**. If you wish to use different formats, you should convert it to the above mentioned formats. Some tips how to find software for converting images: <https://www.google.com/search?q=free+image+convert>

### ? *How can I display the step's calculation time?*

Options / Session Tree / Display Step Time

### ? *Can I run Modular-X in **Linux** environment?*

Currently the software is supported only in Windows operating system (**Windows 7, Vista, XP, Embedded**).

### ? *How can I display the **step's result** in the **Executor**?*

Click on the specific Step -> Details with the right mouse button. Check the results that you want to display. In the Executor the results are updated in two cases: running Inspection Status or at the end of a Session run.

### ? *Can I temporary **remove/deactivate** a step in Editor?*

First click with your right mouse button on the specific Step(s) you want to deactivate and choose Disable (Steps). If you run the session, the selected Step(s) will be skipped. When one Step is disabled, and you want to activate, then just use right click and choose Enable (Steps). See image below.

## MODULAR-X FAQ

Check Session Run Session	Check Session Run Session	Check Session Run Session
Machine Vision Functions ▶ Programming Tools ▶	Machine Vision Functions ▶ Programming Tools ▶	Machine Vision Functions ▶ Programming Tools ▶
Cut Copy Paste	Cut Copy Paste	Cut Copy Paste
Delete	Delete	Delete
Details Display Result Image Pin Image	Details Display Result Image Pin Image	Delete
Disable	Enable	Disable Steps Enable Steps

Figure 4: Disabling and Enabling steps

### ? *I would like to use an image from a **former** step. How can I do this?*

Use the **Image Buffer** function. Click on the former step and insert Acquire Image/Image Buffer. There you can store (Push) the image and later you can insert the stored image into the Session by retrieving function (Get) of the stored image.

### ? *How can I export my project?*

With the Files / Save as command you can make a new copy from the full project. When using simulated images, only one of the selected images is saved with a project. If you need the rest of the simulation images, you can copy those into the Simulate directory under the project directory.

### ? *Are there more comprehensive ways to **debug** than the light bulb debug button?*

Yes, with the **Debug Mode**. It gives extra information when facing problems loading the project file. Using Debug Mode enables locating or relocating the missing resources (images, calibration file, OCR file etc.). It also gives other extra features (see image below) to debug through certain steps of the application project in the Modular-X Editor. From the first step or from the last step where Pin Image function was set the Debug function shows all images step by step with a delay in between (Highlight Time). See the user guide for help for enabling the Debug Mode.